

# Hampshire Primary Maths CPD Packages



**Are you looking to develop your staff subject knowledge and support teaching and learning in mathematics in 2024/2025?**

Our passionate primary maths advisers bring a wealth of experience and expertise to support schools in all aspects of leadership, curriculum and teaching.

We are available for:

- INSET training
- Staff meetings
- Subject Leader development
- PPA Support

# Overview

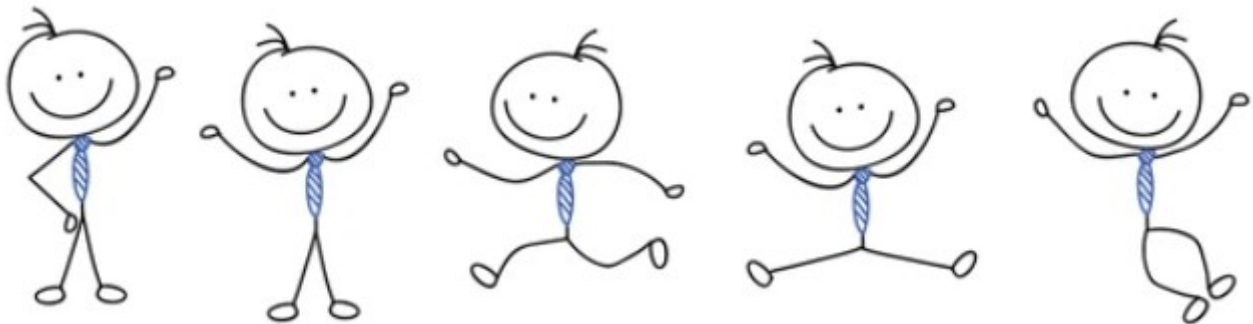
Our primary maths advisers are available to book for bespoke staff CPD tailored to the needs of your school.

In this document, you will find details regarding our range of **new** packages for 2024/2025.

Scan the package QR code to register your interest for free and a member of the maths team will be in contact to arrange your visit.

## Cost-efficiency?

Have you considered inviting local cluster schools to share the cost of the package? We would be delighted for you to extend an invitation and bring in other schools to join the session. By doing so, you not only share the costs but also maximise the value, ensuring a more worthwhile investment for all involved.



**Moodles:** Have you visited the HIAS Moodles? The Moodle sites include top-quality resources, training and course materials

[Hampshire Inspection and Advisory Service Moodles \(mylearningapp.com\)](http://mylearningapp.com)

Do not forget to sign up to our site news pages so we can keep you up to date with the latest news and training opportunities from the HIAS subject teams.

# The 'Learning Journey' Package

Aims: To improve teacher confidence and support ECTs when planning a unit of work.

Session 1

**1.5 hour planning workshop delivered as a staff meeting or PPA planning session.**

Professional development workshop, focusing on:

- Establishing explicit knowledge intent for the sequence of learning.
- Establishing what prior knowledge needs to be checked before teaching new knowledge.
- Establishing the small steps in the learning journey.
- Establishing opportunities to use AfL to check for understanding.
- Establishing opportunities to apply knowledge within reasoning and problem-solving.

**Teachers will create an S-Plan for an upcoming unit using their school's curriculum and medium-term plan with the advice and expertise from a Hampshire Maths Adviser.**

Session 2

**Impact Review**

Working with Maths Leaders to review pupil outcomes following teaching of the learning journey planned during session 1.

Identify actions and next steps.



Scan the QR code below to register your interest for free.



Subscription rate	Package charged at a full day inspector rate
<b>Full discount rate</b> (100% subscription)	£756
<b>Partial discount rate</b> (50% subscription)	£795
<b>Full cost</b> (no subscription)	£850

# The 'Developing Arithmetic' Package

**Aims:** To craft a tailored long-term overview encompassing arithmetic and retrieval practice designed to secure a deep-rooted understanding of mathematical concepts among pupils.

Face-to-face workshop

## INSET/Staff Meeting/ Maths Leader Support.

Professional Development session focused on:

- Developing long-term overviews to support regular arithmetic and retrieval practice.
- Supporting staff subject knowledge with teaching mental fluency so that pupils are confident and competent mathematicians.
- Understanding the strategies needed to enhance fluency in recalling mathematical facts in SATs style tasks for pupils in Year 2, 3, 4 and 5.
- Auditing pupils' arithmetic strengths and weaknesses to inform teaching and learning.

**Maths Leaders, alongside teachers if appropriate, will design an arithmetic overview to ensure explicit teaching and independent practice of key number facts.**

**This session will inform maths leaders key priorities and monitoring activities across the school.**

Scan the QR code to register your interest for free.



Subscription rate	1.5 hour staff training or PPA session charged at half- day inspector rate	3 hour INSET charged at full day inspector rate
<b>Full discount rate</b> (100% subscription)	£430.50	£756
<b>Partial discount rate</b> (50% subscription)	£448	£795
<b>Full cost</b> (no subscription)	£465.50	£850

# The 'Problem Solving at KS1' Package

**Aims:** To develop teachers' pedagogy on the various approaches to teaching the skills needed for effective problem solving at KS1. Teachers will have the opportunity to explore the different styles of problems which enable pupils to develop and embed their mathematical skills.

Face-to-face workshop

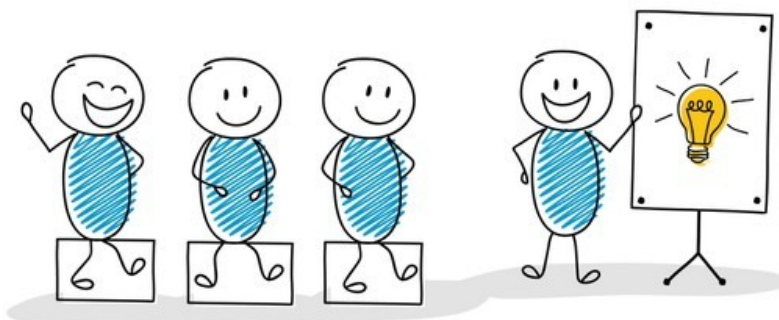
## INSET/Staff Meeting/ Planning workshop

Professional Development session focused on:

- Understanding the different teaching strategies to use when teaching problem solving.
- Developing knowledge of heuristics and how to apply these within problem-solving.
- Exploring various styles of problems which enable pupils to develop and embed their mathematical understanding
- Identifying a rich problem and considering task variation to meet the needs of all pupils.

**Teachers will have the opportunity to plan a problem solving lesson for an upcoming unit of work**

Scan the QR code below to register your interest for free.



Subscription rate	1.5 hour staff training or PPA session charged at half- day inspector rate	3 hour INSET charged at full day inspector rate
Full discount rate (100% subscription)	£430.50	£756
Partial discount rate (50% subscription)	£448	£795
Full cost (no subscription)	£465.50	£850

# The 'Moderation' Package

Aims: To develop accurate teacher assessment and a shared understanding of what the expected standard and greater depth looks like at each data drop.

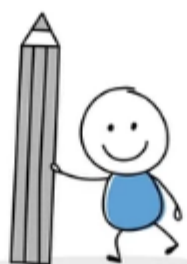
Face-to-face workshop

## Staff Meeting/ PPA workshop

Professional Development session focused on:

- Identifying key objectives to moderate against.
- Understanding what 'on track' or 'mastery' looks like at different stages of the year and the journey from one year group to the next.
- Looking at task design and outcome to reflect upon whether the pupil response enabled them to achieve what you had hoped.
- Using diagnostic assessment to identify strengths and next steps to inform future teaching and learning.
- Developing staff subject knowledge around evidence gathering for all 3 aims of the National Curriculum.

Teachers will complete a moderation form which will detail current strengths and identify key actions for future planning.



Scan the QR code below to register your interest for free.



Subscription rate	1.5 hour staff training or PPA session charged at half-day inspector rate
Full discount rate (100% subscription)	£430.50
Partial discount rate (50% subscription)	£448
Full cost (no subscription)	£465.50

# The 'Effective Guided Group Work' Package

Aims: To enhance **Learning Support Assistants'** knowledge and understanding of effective guided group work strategies to enable pupils to reach independent practice.

Face-to-face workshop

## INSET/Afternoon workshop

Professional Development session focusing on:

- Exploring how to implement the 'I do, We do, You do' strategy.
- Ensuring pupils show a good level of understanding through sufficient independent practice.
- Developing faded scaffold examples to enable pupils to gain confidence on their journey to independence.
- Constructing intelligent practice questions which enable pupils to identify mathematical structures and practice the thinking process.
- Checking for understanding by asking 'better' questions.

**Learning Support Assistants will take part in an interactive and engaging workshop where they will be able to explore task variation to reduce cognitive overload.**

**They will also have opportunity to create faded scaffolds and intelligent practice sequences using a model worked example.**

Scan the QR code to register your interest for free.



Subscription rate	1.5 hour staff training charged at half- day inspector rate
<b>Full discount rate</b> (100% subscription)	£430.50
<b>Partial discount rate</b> (50% subscription)	£448
<b>Full cost</b> (no subscription)	£465.50

# Contact details

## Kate Spencer

Lead Primary Inspector/Adviser for Mathematics

Tel: 01962 876207

Email: [kathryn.spencer@hants.gov.uk](mailto:kathryn.spencer@hants.gov.uk)

## Jo Lees

Lead Secondary Inspector/Adviser for Mathematics

Tel: 01962 876207

Email: [jo.lees@hants.gov.uk](mailto:jo.lees@hants.gov.uk)

## Mathematics Advisory Centre

Tel: [01962 843893](tel:01962843893)

Email: [maths.centre@hants.gov.uk](mailto:maths.centre@hants.gov.uk)

Website: [www.hants.gov.uk/educationandlearning/hias](http://www.hants.gov.uk/educationandlearning/hias)

Moodle: <http://maths.hias.hants.gov.uk/>



## Looking for other CPD opportunities?

Details of our upcoming mathematics courses and networks are provided below. Scan the QR code for our full catalogue of mathematics professional learning opportunities.